

Mellow Yellow

by Satin Moon Designs

Quilt design by Denise Russell.



Quilt size: 60"x 72."

Skill Level: Advanced Beginner.

Blank Quilting Corporation
49 West 37th Street ♦ New York, NY 10018
Tel: 800-294-9495 ♦ Fax: 212-679-4578
www.blankquilting.net

facebook

Free Project
NOT FOR RESALE

Mellow Yellow - Fabrics in the Collection



1964-90 Large Floral
Lt. Gray



1964-99 Large Floral
Black



1965-44 Floral Collage
Yellow



1966-44 Leaves
Yellow



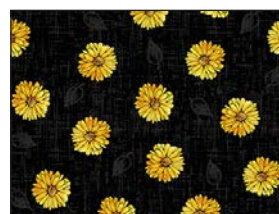
1966-90 Leaves
Lt. Gray



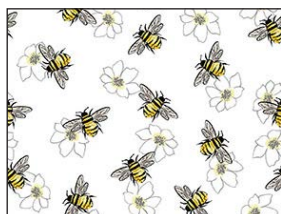
1967-44 Scroll
Yellow



1968-44 Mini Daisies
Yellow



1968-99 Mini Daisies
Black



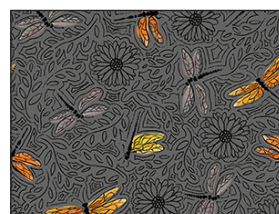
1969-01 Bees
White



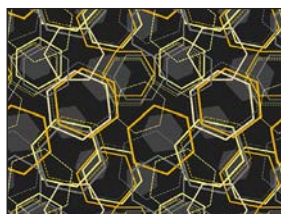
1969-95 Bees
Gray



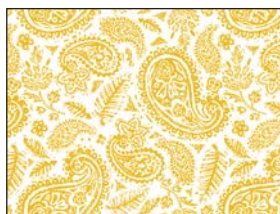
1970-44 Dragonflies
Yellow



1970-95 Dragonflies
Gray



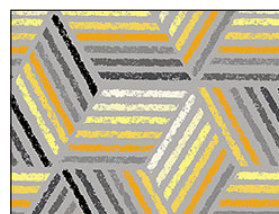
1971-99 Honeycomb
Geometric - Black



1972-01 Paisley
White



1972-99 Paisley
Black



1973-90 Geometric
Lt. Gray



1973-99 Geometric
Black

Selected fabrics from the
Jot Dot I and II collections



9570-09 Marshmallow



9570-42 Md. Yellow

Mellow Yellow - Quilt 1

Page 1

Materials

Yardages and cutting instructions are based on 42" of usable fabric width.

1/8 yard 1968-99 Mini Daisies - Black
1/4 yard 1966-44 Leaves - Yellow
1/4 yard 1967-44 Scroll - Yellow
1/4 yard 1968-44 Mini Daisies - Yellow
1/4 yard 1970-95 Dragonflies - Gray
1/4 yard 1971-99 Honeycomb Geometric - Black
1/4 yard 1973-90 Geometric - Lt. Gray
3/8 yard 9570-42 Jot Dot - Md. Yellow
3/8 yard 1969-95 Bees - Gray
3/8 yard 1972-01 Paisley - White
1/2 yard 1965-44 Floral Collage - Yellow
5/8 yard 9570-99 Jot Dot - Black
5/8 yard 1970-44 Dragonflies - Yellow
7/8 yard 1964-99 Large Floral - Black
2-5/8 yards 9570-09 Jot Dot - Marshmallow
4 yards 1964-90 Large Floral - Lt. Gray for backing
68" x 80" piece of Air Lite® Colour Me 100% Cotton batting
Plastic for template
Fusible web
Matching thread for machine appliqué.

Cut Fabrics

Note: All strips are cut across the width of the fabric (WOF) from selvage to selvage unless otherwise indicated.

From 1968-99 Mini Daisies – Black:

*Cut one 3-1/2" x WOF strip. Sub-cut twelve 3-1/2" squares.

From each:

1966-44 Leaves – Yellow

1967-44 Scroll - Yellow

*Cut twelve petals using template L.

From each:

1968-44 Mini Daisies - Yellow

1970-95 Dragonflies - Gray

*Cut twenty petals using template L.

From 1971-99 Honeycomb Geometric – Black:

*Cut sixteen petals using template L.

From 1973-90 Geometric - Lt. Gray:

*Cut twelve petals using template M.

From each:

9570-42 Jot Dot - Md. Yellow

1969-95 Bees – Gray

*Cut twenty petals using template M.

From 1972-01 Paisley - White:

*Cut seven 1-1/2" x WOF strips for border 4.

From 1965-44 Floral Collage – Yellow:

*Cut six 1-1/2" x WOF strips for border 2.

*Cut twelve petals using template M.

From 9570-99 Jot Dot – Black:

*Cut seven 2-1/2" x WOF strips for binding.

From 1970-44 Dragonflies – Yellow:

*Cut two 4-1/4" x WOF strips. Sub-cut twelve 4-1/4" squares.

*Cut sixteen petals using template M.

From 1964-99 Large Floral – Black:

*Cut seven 3-1/2" x WOF strips for border 3.

From 9570-09 Jot Dot – Marshmallow:

*Cut three 2-3/8" x WOF strips. Sub-cut forty-eight 2-3/8" squares.

*Cut two 6-1/2" x WOF strips. Sub-cut seventeen 3-1/2" x 6-1/2" rectangles and three 3-1/2" x 8" rectangles.

*Cut one 8" x WOF strip. Sub-cut eleven 3-1/2" x 8" rectangles (for a total of fourteen).

*Cut five 9-1/2" x WOF strips. Sub-cut twenty 9-1/2" squares.

*Cut six 2-1/2" x WOF strips for border 1.

*Cut forty circles with template.

Assemble Blocks

Measurements include 1/4" seam allowances. Sew with right sides together unless otherwise stated. If no direction is specified, press the seam toward the darker fabric.

Refer to Table 1 next page for the fabric combinations to assemble the blocks.

Mellow Yellow - Quilt 1

Page 2






 <p>Block 1 – Make 3 *1965-44 Floral Collage – Yellow (Cut 12 M) *1966-44 Leaves – Yellow (Cut 12 L)</p>	 <p>Block 2 – Make 3 *1973-90 Geometric - Lt. Gray (Cut 12 M) *1967-44 Scroll – Yellow (Cut 12 L)</p>	 <p>Block 3 – Make 4 *1970-44 Dragonflies – Yellow (Cut 16 M) *1971-99 Honeycomb Geometric – Black (Cut 16 L)</p>	 <p>Block 4 – Make 5 *9570-42 Jot Dot - Md. Yellow (Cut 20 M) *1970-95 Dragonflies – Gray (Cut 20 L)</p>	 <p>Block 5 – Make 5 *1969-95 Bees – Gray (Cut 20 M) *1968-44 Mini Daisies – Yellow (Cut 20 L)</p>
--	---	---	---	--

Table 1. Fabric combination for each block.

1. Trace templates L, M, and the circle on the plastic to make templates. Cut on the outline. Trace templates on the smooth side of the fusible web: eighty times **each** for the L and M templates, and forty times for the circles. Cut each shape 1/8" outside the outline, copy the letter on a corner of it (so you will know which is which once you do the next step), then cut inside each **petal** to remove most of the fusible web from its middle, leaving about 1" inside to make them hollow (*figure 1*). Fuse the shapes to the wrong side of the fabrics as listed in Table 1, cut on the outline, and remove the paper backing.

Notes:

- By hollowing the fusible web for the petals you will ensure a softer hand to the quilt.
- Group petals per block for correct fabric placement.
- To prevent shadowing, you are cutting an additional 20 Marshmallow circles. As they are fused to the center of each block, the double circles will help cover the dark petal fabrics that might otherwise show through.
- As you fuse the shapes, be sure there is 1/4" between the points of shapes L and the edge of the background block for the seam allowance.

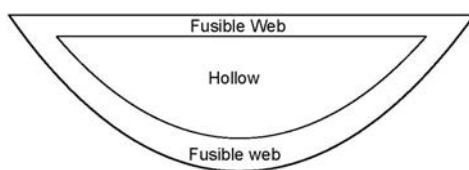


Figure 1 – Trace 80 times each templates L and M, 40 times the circles.

2. Fold and crease the 9-1/2" 9570-09 Jot Dot - Marshmallow squares in half twice, then diagonally twice. Position the petals on the squares using the creased folds as guidelines (align the smaller L petals with the cross-wise creases; align the larger M petals with the diagonal creases) and fuse them according to the manufacturer's instructions. Stack two circles on the center of the blocks and fuse (*figure 2, next page*). Machine appliqué using matching thread and the blanket stitch. Make twenty assorted 9-1/2" blocks.

Mellow Yellow - Quilt 1 Page 3

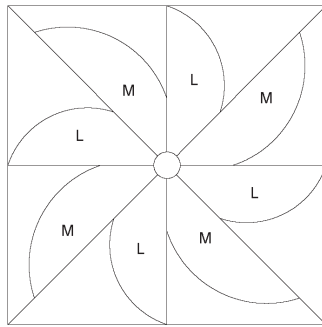


Figure 2

3. Mark a diagonal line on the wrong side of the 2-3/8" 9570-09 Jot Dot - Marshmallow squares. With right sides together, place two marked Marshmallow squares on opposite corners of one 4-1/4" 1970-44 Dragonflies - Yellow square, making sure drawn lines are intersecting in the middle and noting that the corners of the small squares will overlap. Stitch 1/4" on each side of the marked line (a), cut on the drawn line (b), and press each unit open (c). Place one more marked Marshmallow square on the corner of each unit, stitch as before (d), and cut. Press the seams open (e) to make four 2" x 3-1/2" flying-geese units. Repeat with the remaining 2-3/8" Marshmallow and the 4-1/4" Dragonflies - Yellow squares to make a total of forty-eight flying-geese units (*figure 3*).

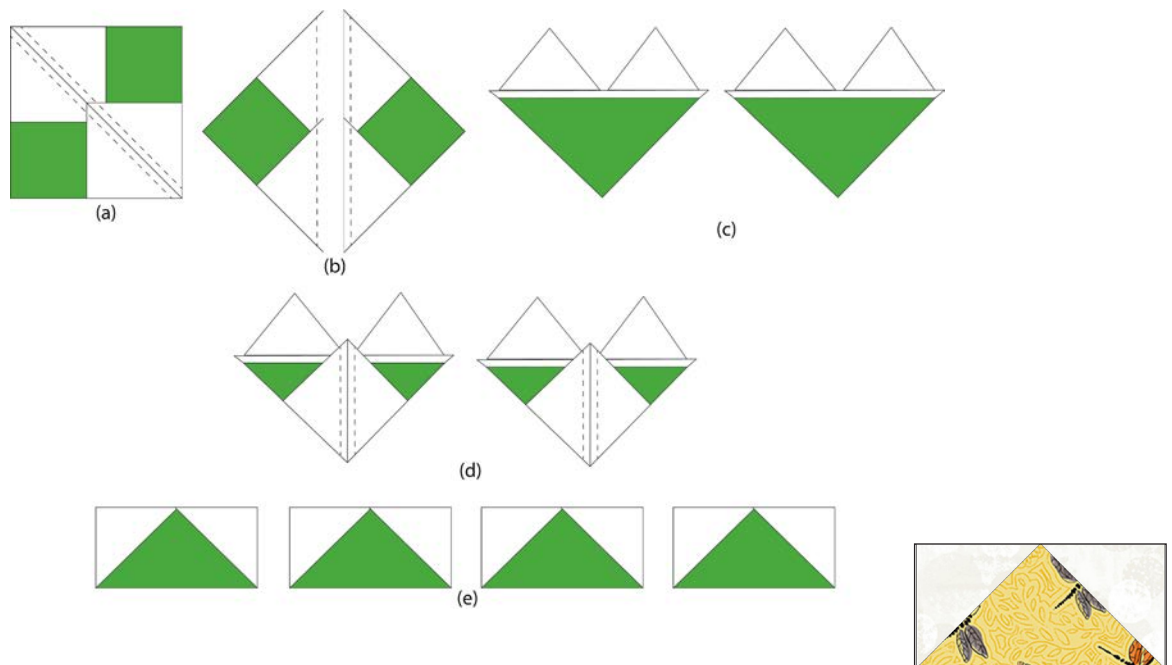


Figure 3 – Make 48 (2" x 3-1/2") flying-geese units.

4. Noting fabric orientation, sew one Step 3 flying geese to opposite sides of a 3-1/2" x 6-1/2" 9570-09 Jot Dot - Marshmallow rectangle (*figure 4*). Press the seams toward the center. Repeat to make seventeen 3-1/2" x 9-1/2" inner sashing units.



Figure 4 – Make 17 (3-1/2" x 9-1/2") units.

Mellow Yellow - Quilt 1

Page 4

5. Noting fabric orientation, sew one Step 3 flying geese unit to the left side of a 3-1/2" x 8" 9570-09 Jot Dot – Marshmallow rectangle (figure 5). Press the seams toward the center. Repeat to make fourteen 3-1/2" x 9-1/2" outer sashing units.



Figure 5 – Make 14 (3-1/2" x 9-1/2") units.

Assemble Quilt Top

6. Referring to the quilt photo for block placement and orientation of the sashing blocks, lay out four blocks and three 3-1/2" x 9-1/2" sashing units in five rows as follows:

Row 1: four blocks and three Step 5 outer sashing units.

Rows 2 – 4: four blocks and three Step 4 inner sashing units.

Row 5: four blocks and three Step 5 outer sashing units.

Join the blocks and sashing units together in each row. Press the seams away from the sashing.

7. To make the horizontal sashing rows, sew together four sashing units and three 3-1/2" 1968-99 Mini Daisies – Black cornerstone squares in this order and noticing fabric orientation: Step 5 outer sashing, cornerstone, Step 4 inner sashing, cornerstone, Step 4 inner sashing, cornerstone, Step 5 outer sashing. Press the seams away from the sashing. Repeat to make a total of four sashing strips.

8. Matching adjacent seams, sew block rows and horizontal sashing strips together. Press the seams in one direction.

9. For border 1, sew six 2-1/2" 9570-09 Jot Dot – Marshmallow strips together end to end using diagonal seams. Measure the vertical length of the quilt top through the center and cut two border strips that length. Sew one strip to each side of the quilt top. Measure the width of the quilt top through the center. Cut two border strips that length and sew one to the top and one to the bottom. Press the seams toward the borders.

10. Repeat Step 9 with the six 1-1/2" 1965-44 Floral Collage – Yellow strips to make and add border 2.

11. Repeat Step 9 with the seven 3-1/2" 1964-99 Large Floral – Black strips to make and add border 3.

12. Repeat Step 9 with the seven 1-1/2" 1972-01 Paisley – White strips to make and add border 4.

Finishing

13. Create a quilt sandwich with the batting between the quilt top and the backing. Pin or baste layers together, mark quilting design, and quilt by hand or machine. When quilting is complete, remove pins or basting, and trim batting and backing even with raw edges of the quilt top.

14. Join the seven 2-1/2" 9570-99 Jot Dot – Black binding strips together end to end using a diagonal seam to make one long strip. Fold in half lengthwise and press. Sew binding to the edges of the quilt, mitering corners, and overlapping ends. Fold binding to the back of the quilt and stitch it in place by hand to finish.

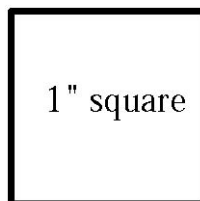
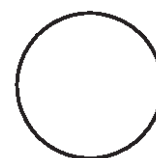
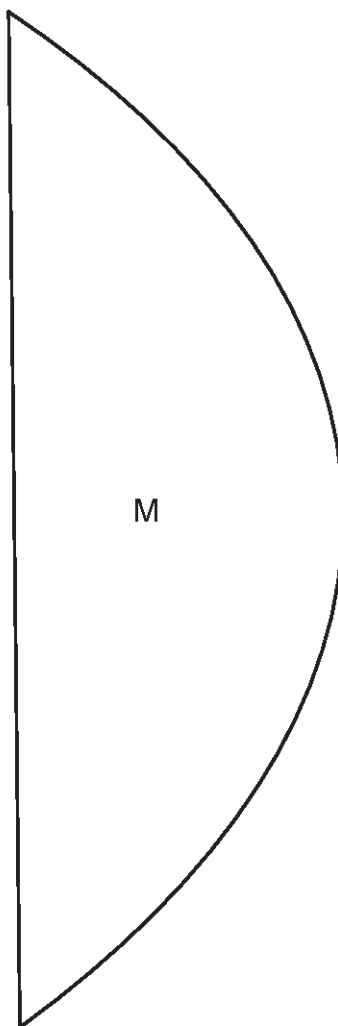
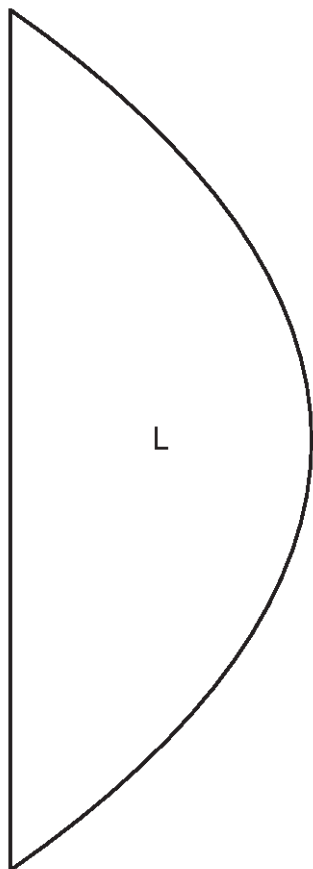
©2021 Blank Quilting Corporation

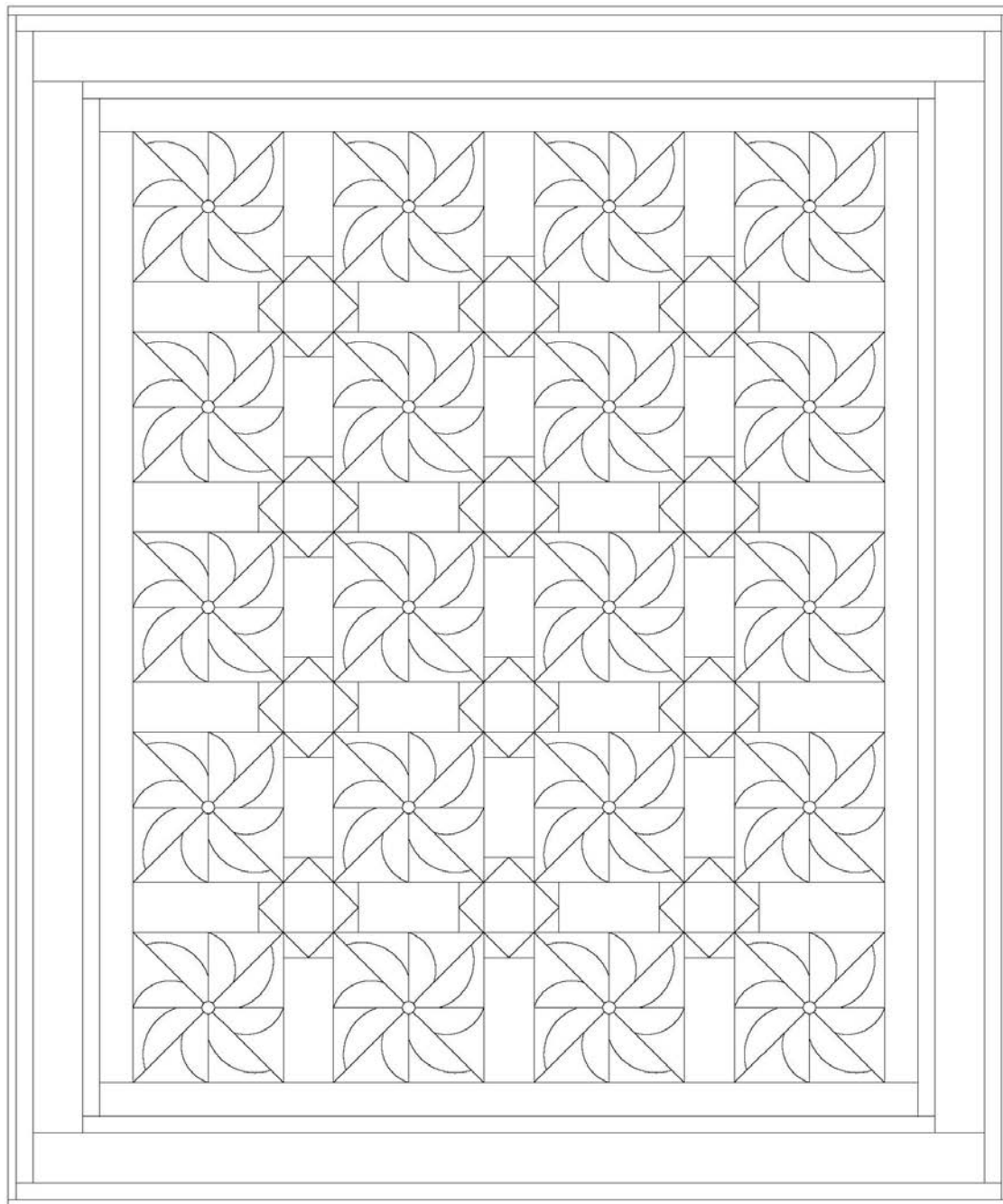
Every effort has been made to ensure that all projects are error free. All the information is presented in good faith; however, no warranty can be given nor results guaranteed as we have no control over the execution of instructions. Therefore, we assume no responsibility for the use of this information or damages that may occur as a result. When errors are brought to our attention, we make every effort to correct and post a revision as soon as possible. Please make sure to check www.blankquilting.net for pattern updates prior to starting the project. We also recommend that you test the project prior to cutting for kits. Finally, all free projects are intended to remain free to you and are not for resale.

Mellow Yellow - Quilt 1

Page 5

Templates
100% Scale





Quilt Diagram