

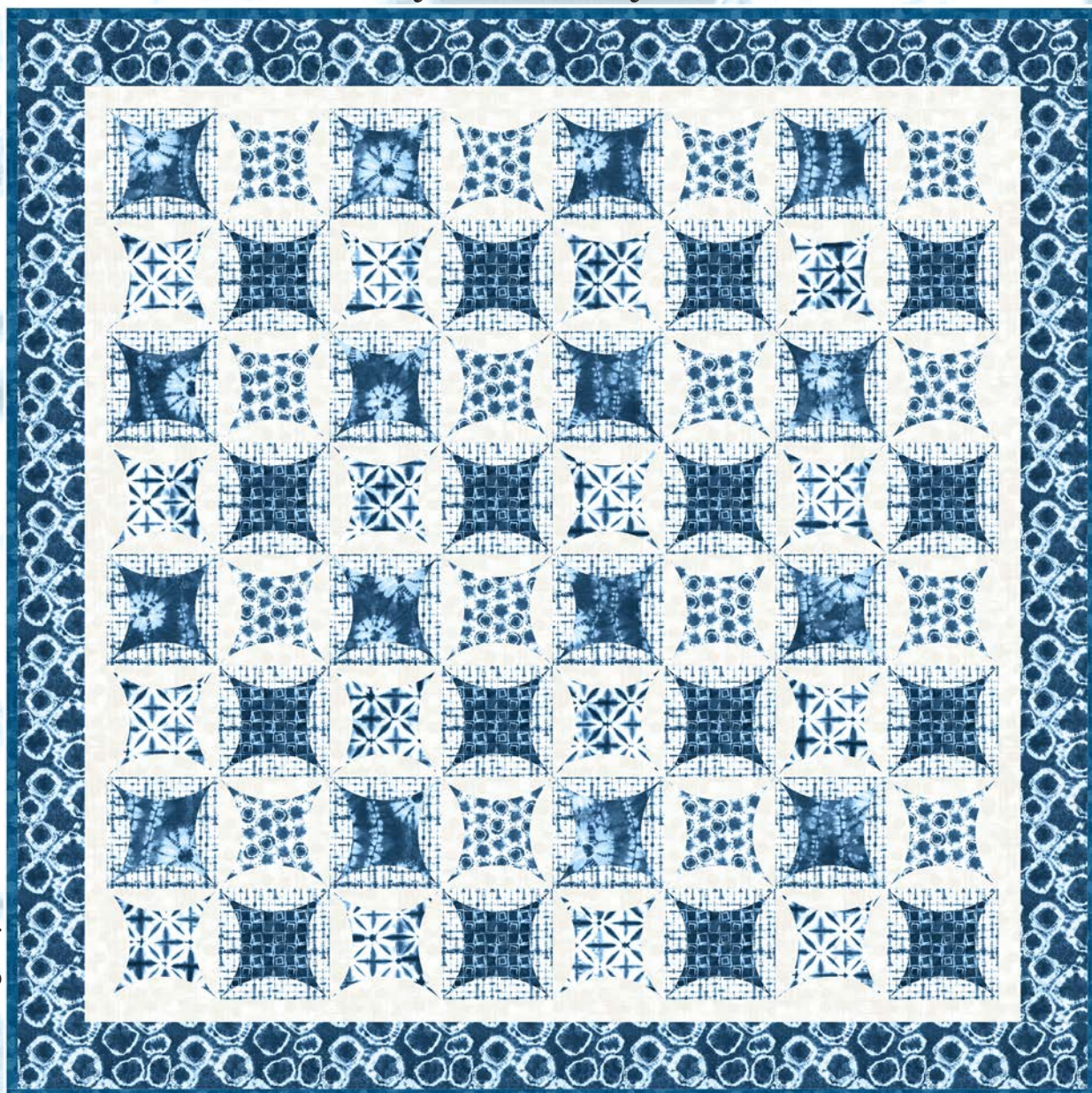


Quilt 2

No Curved  
Piecing!

# Katori

by Two if by Sea



Quilt design by Denise Russell.

Quilt size: 46" x 46"

Skill Level: Beginner

**Blank Quilting Corporation**

49 West 37th Street ♦ New York, NY 10018

Tel: 800-294-9495 ♦ Fax: 212-679-4578

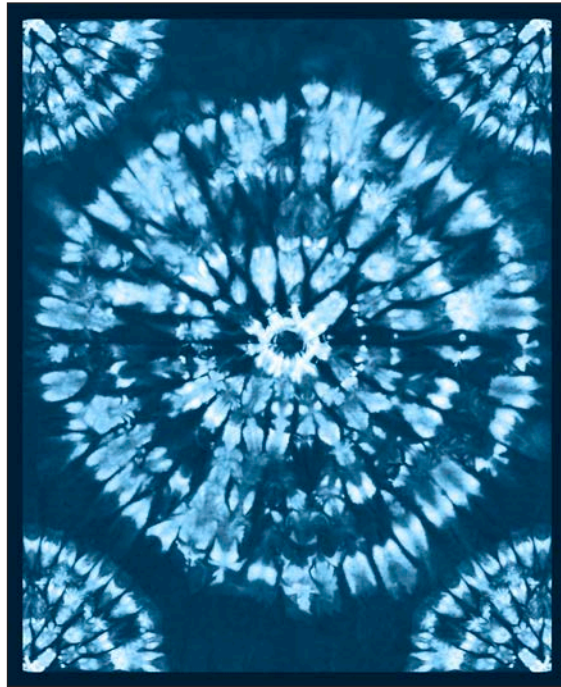
[www.blankquilting.net](http://www.blankquilting.net)

facebook

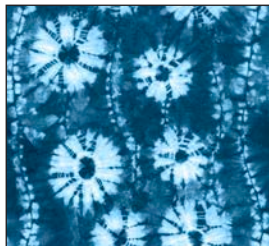
Free Project  
NOT FOR RESALE



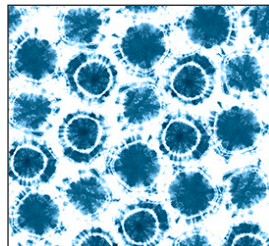
# Katori - Fabrics in the Collection



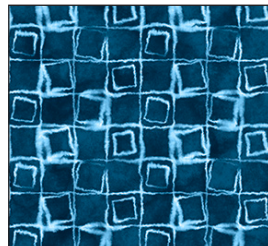
2203P-75 Circle Panel  
Blue



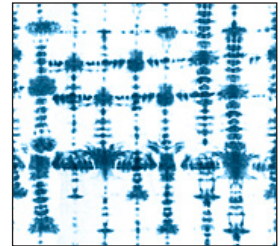
2194-75 Floral Chain  
Blue



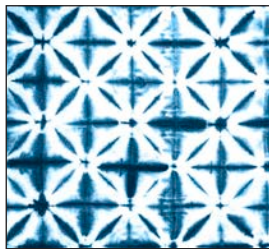
2195-01 Small Dot  
White



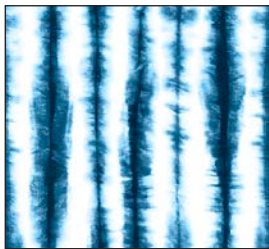
2196-75 Squares  
Geometric - Blue



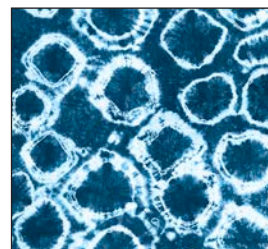
2197-01 Grid Geo  
White



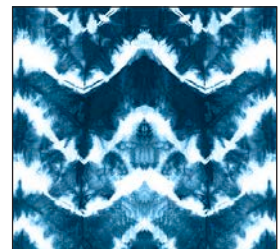
2198-01 Tiles  
White



2199-01 Stripe  
White



2200-75 Circles  
Blue



2201-75 Chevron  
Blue



2202-75 Diamonds  
Blue

Selected fabrics from the  
Jot Dot I and II Collections



9570-09  
Marshmallow



9570-75  
Ocean

# Katori - Quilt 2

Page 1

## Materials

*Yardages and cutting instructions are based on 42" of usable fabric width*

3/8 yard 2194-75 Floral Chain - Blue  
3/8 yard 2195-01 Small Dot - White  
3/8 yard 2196-75 Squares Geometric - Blue  
3/8 yard 2198-01 Tiles - White  
1/2 yard 9570-75 Jot Dot - Ocean  
5/8 yard 2200-75 Circles - Blue  
2/3 yard 2197-01 Grid Geo - White  
1 yard 9570-01 Jot Dot - Marshmallow  
3-1/8 yards 2196-75 Squares Geometric - Blue for backing  
54" x 54" piece of Air Lite® Colour Me 100% Cotton batting  
Fusible web  
Plastic for template

## Cut Fabrics

**Note:** All strips are cut across the width of the fabric (WOF) from selvage to selvage unless otherwise indicated.

### From each:

**2194-75 Floral Chain – Blue**

**2195-01 Small Dot – White**

**2196-75 Squares Geometric – Blue**

**2198-01 Tiles - White**

\*Cut sixteen appliqué shapes using the template.

### From 9570-75 Jot Dot – Ocean:

\*Cut six 2-1/2" x WOF strips for binding.

### From 2200-75 Circles – Blue:

\*Cut five 3-1/2" x WOF strips for border 2.

### From 2197-01 Grid Geo – White:

\*Cut four 5-1/8" x WOF strips. Sub-cut thirty-two 5-1/8" squares.

### From 9570-01 Jot Dot – Marshmallow:

\*Cut four 5-1/8" x WOF strips. Sub-cut thirty-two 5-1/8" squares.

\*Cut four 1-1/2" x WOF strips for border 1.

## Assemble Blocks

### Notes:

*a. Measurements include 1/4" seam allowances. Sew with right sides together unless otherwise stated. If no direction is specified, press the seam toward the darker fabric.*

*b. Consider making a sample block using other fabrics and the template you traced, to ensure the appliqué shapes fit the background correctly.*

1. Trace the appliqué shape on the plastic to make templates. Cut on the outline. Trace the template sixty-four times on the smooth side of the fusible web. Cut each shape 1/8" outside the outline, then make them hollow by removing their centers, leaving about 3/8" near the outline so blocks will have a softer hand (*figure 1*). Fuse sixteen shapes to the back of each of these fabrics: 2194-75 Floral Chain – Blue, 2195-01 Small Dot – White, 2196-75 Squares Geometric – Blue, 2198-01 Tiles - White. Cut on the outline and remove the backing paper.

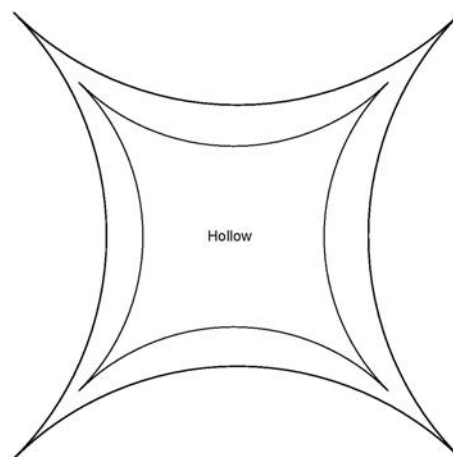


Figure 1

2. Fold and crease the 5-1/8" 2197-01 Grid Geo – White and 9570-01 Jot Dot – Marshmallow squares in half diagonally twice. Refer to Table 1 below for fabric combination and position the appliqué shapes on squares using the creased folds as guidelines. Ensure the points of the shapes are 1/4" away from the edges for the seam allowance. Fuse them according



# Katori - Quilt 2

Page 2

to the manufacturer's instructions (*figure 2*). Machine appliqué using matching thread and a small zig-zag stitch. Make sixteen 5-1/8" blocks of each type.

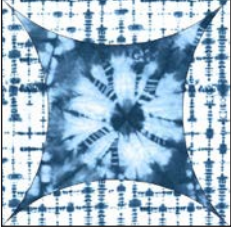
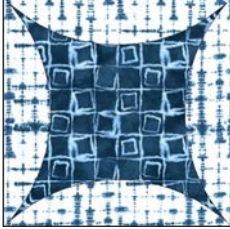
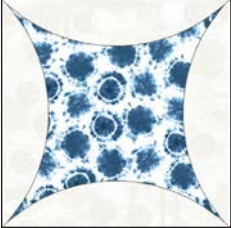
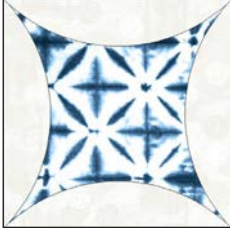
	
2197-01 Grid Geo - White 2194-75 Floral Chain - Blue	2197-01 Grid Geo - White 2196-75 Squares Geometric - Blue
	
9570-01 Jot Dot - Marshmallow 2195-01 Small Dot - White	9570-01 Jot Dot - Marshmallow 2198-01 Tiles - White

Table 1 – Fabric combination for each patch.

Figure 2 – Make 16 of each.

3. Sew together the Step 2 5-1/8" squares to make sixteen 9-3/4" blocks featuring one of each patch type (*figure 3*). Press the seams in one direction.

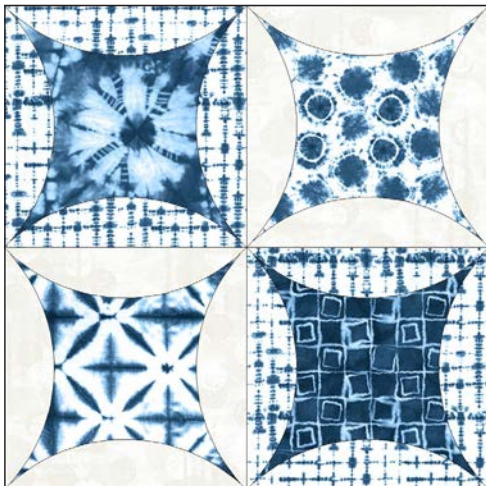


Figure 3 – Make (16) 9-3/4" blocks.

## Assemble Quilt Top

4. Following the quilt photo for block placement, lay out four rows of four blocks each. Sew the blocks together in each row, then matching adjacent seams sew the rows together in order.

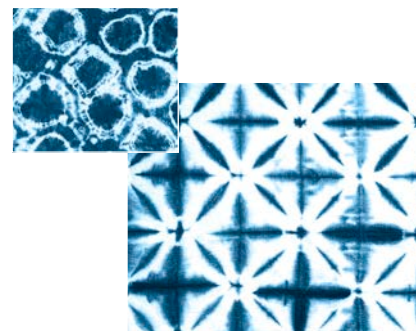
5. Join the four 1-1/2" 9570-01 Jot Dot – Marshmallow strips together end to end using diagonal seams. Measure the vertical length of the quilt top through the center and cut two border strips that length. Sew one strip to each side of the quilt top and press the seams toward the border strips. Measure the width of the quilt top through the center. Cut two border strips that length and sew one to the top and one to the bottom. Press the seams toward the borders.

6. Repeat Step 5 with the five 3-1/2" 2200-75 Circles – Blue strips to make and add border 2.

## Finishing

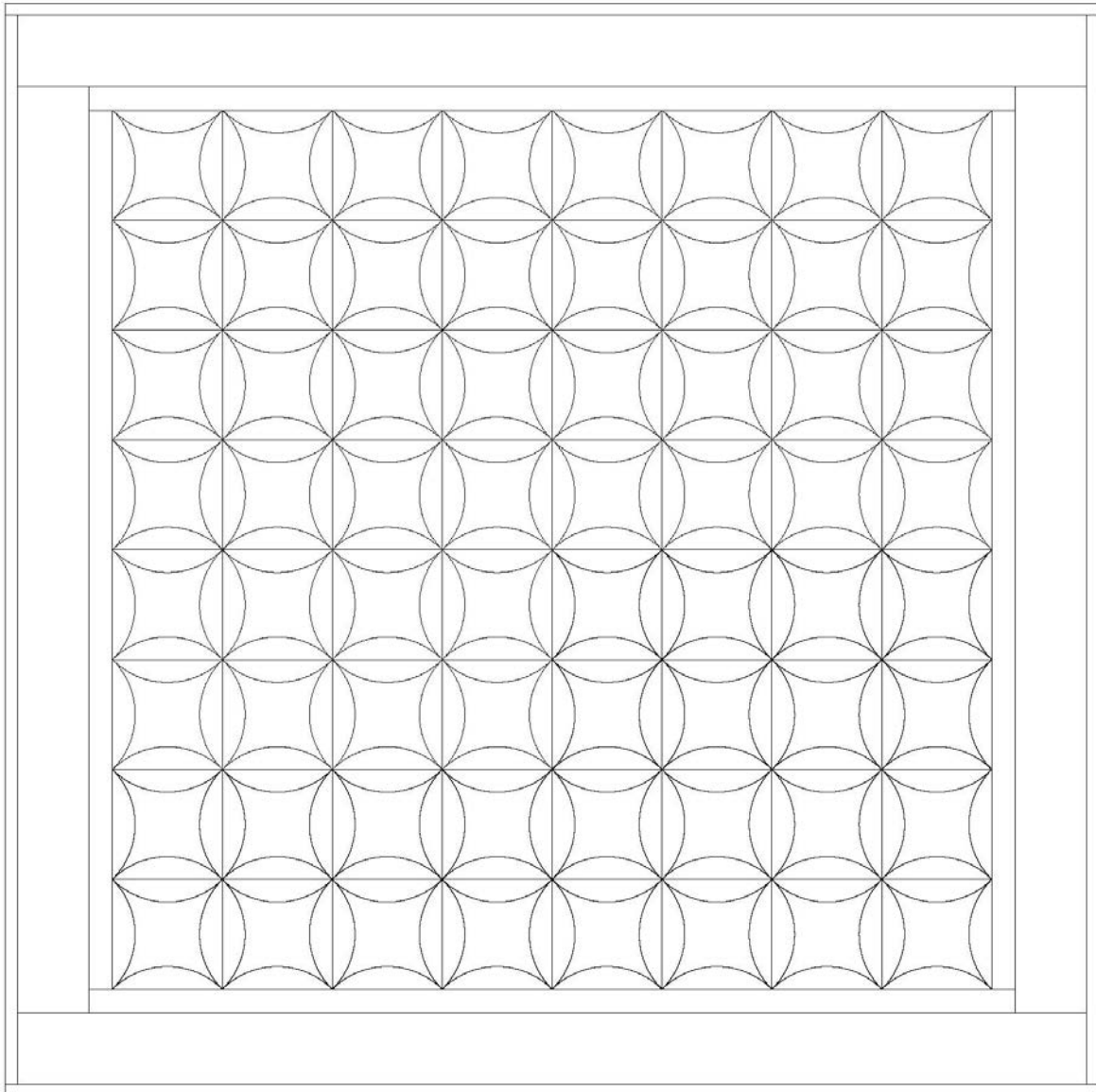
7. Create a quilt sandwich with the batting between the quilt top and the backing. Pin or baste layers together, mark quilting design, and quilt by hand or machine. When quilting is complete, remove pins or basting, and trim batting and backing even with raw edges of the quilt top.

8. Join the six 2-1/2" 9570-75 Jot Dot – Ocean binding strips together end to end using a diagonal seam to make one long strip. Fold in half lengthwise and press. Sew binding to the edges of the quilt, mitering corners, and overlapping ends. Fold binding to the back of the quilt and stitch it in place by hand to finish.



# Katori - Quilt 2

Page 3



Quilt Diagram

©2021 Blank Quilting Corporation

*Every effort has been made to ensure that all projects are error free. All the information is presented in good faith; however, no warranty can be given nor results guaranteed as we have no control over the execution of instructions. Therefore, we assume no responsibility for the use of this information or damages that may occur as a result. When errors are brought to our attention, we make every effort to correct and post a revision as soon as possible. Please make sure to check [www.blankquilting.net](http://www.blankquilting.net) for pattern updates prior to starting the project. We also recommend that you test the project prior to cutting for kits. Finally, all free projects are intended to remain free to you and are not for resale.*

# Katori - Quilt 2

Page 4

